

## myProbes Passport (RUO Probes)

<b>MPD56340</b>	<b>IGH/FGFR3/MAF Tri-Colour Dual Fusion Probe V2 in Orange</b> <i>For Research Use Only</i>
-----------------	--

**Nucleotide Locations** (If requesting more than one probe please specify individual probe colours)

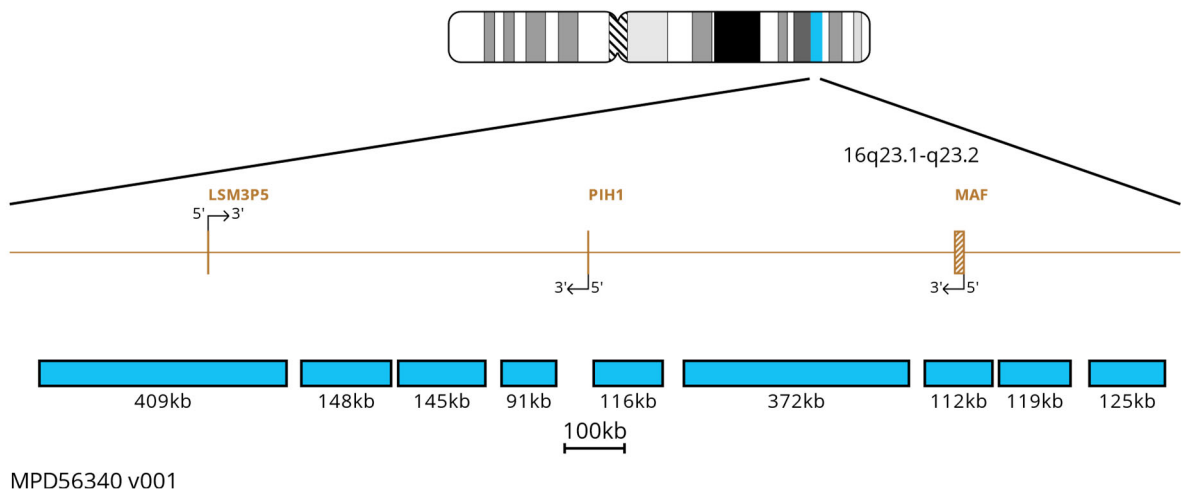
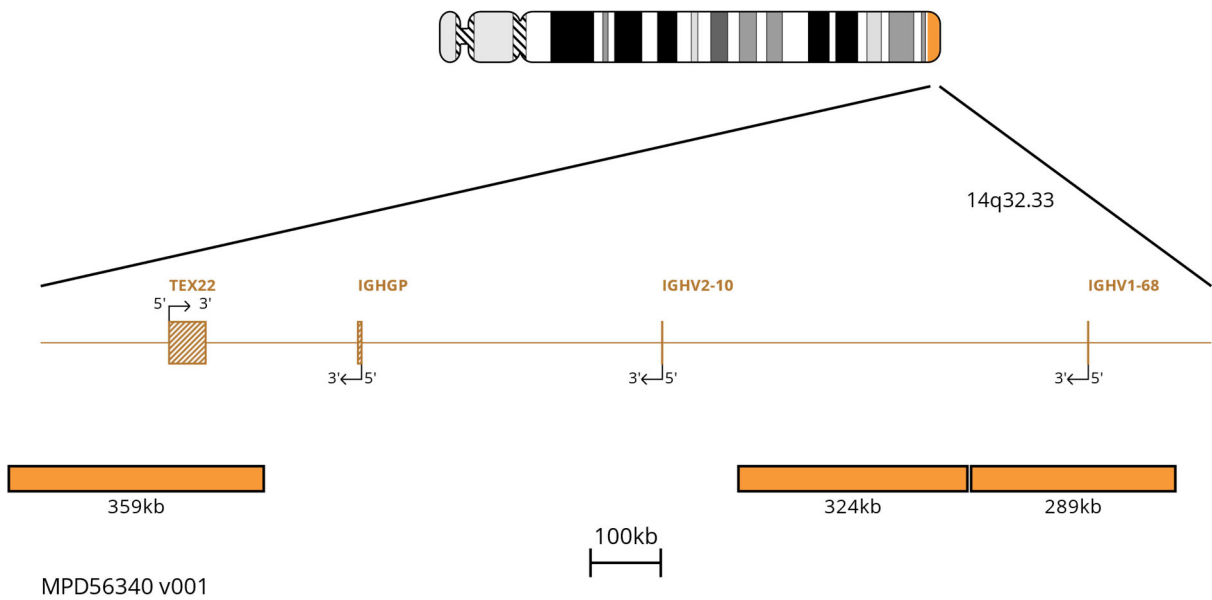
	<b>Chromosome Locus</b>	<b>Start</b>	<b>End</b>	<b>Colour</b>
1	4p16.3	1627471	1745210	GREEN
2	4p16.3	1705480	1824461	GREEN
3	4p16.3	1815269	1966224	GREEN
4	4p16.3	1933329	2078745	GREEN
5	4p16.3	2011466	2137082	GREEN
6	14q32.33	105639058	105802170	ORANGE
7	14q32.33	106667215	106795978	ORANGE
8	14q32.33	106782750	106874173	ORANGE
9	14q32.33	106841162	106991517	ORANGE
10	14q32.33	106995083	107135809	ORANGE
11	14q32.33	107077128	107174326	ORANGE
12	14q32.33	107159171	107268432	ORANGE
13	14q32.33	107258048	107284022	ORANGE
14	14q32.33	105788920	105998428	ORANGE
15	16q23.1	78111469	78278690	AQUA
16	16q23.1	78275867	78520579	AQUA
17	16q23.1	78543049	78691342	AQUA
18	16q23.1	78702557	78847845	AQUA
19	16q23.1	78872851	78963431	AQUA
20	16q23.1	79024699	79140262	AQUA
21	16q23.1-q23.2	79173244	79367699	AQUA

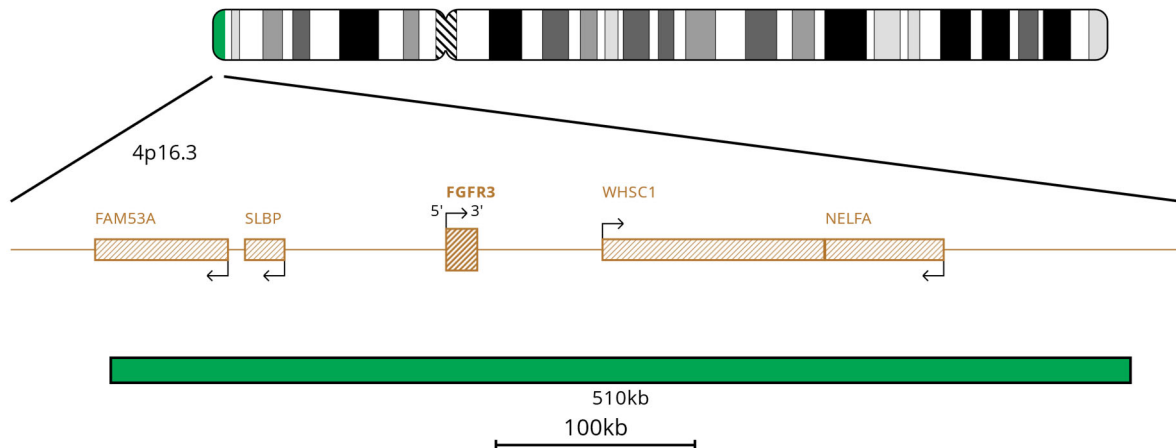
22	16q23.2	79350834	79545726	AQUA
23	16q23.2	79570216	79681950	AQUA
24	16q23.2	79692448	79811678	AQUA </td
25	16q23.2	79841502	79966321	AQUA

Database Used and Version

GRCh37 (hg19)

### Probe Map





MPD56340 v001

## Materials Provided

- Probe:** 100µl per vial  
 The probe is provided pre-mixed in hybridisation solution (Formamide; Dextran Sulphate; SSC) and is ready to use. It is directly labelled with a aqua fluorophore, which lies in the Aqua Spectrum; a green fluorophore, which lies in the FITC Spectrum; and an orange fluorophore, which lies in the Orange Spectrum. The probe has been batch released after QC testing on Formalin Fixed Paraffin Embedded Sample and a Bone Marrow sample.
- Counterstain:** 150µl per vial. The counterstain is DAPI antifade (ES: 0.125µg/ml DAPI (4,6-diamidino-2-phenylindole)).

## Warnings and Precautions

- For research use only. Not for use in diagnostic procedures.
- For laboratory professional use only.
- Probe mixtures contain formamide, which is a teratogen; do not breathe fumes or allow skin contact. Handle with care; wear gloves and a lab coat.
- DAPI is a potential carcinogen. Handle with care; wear gloves and a lab coat.
- Follow local disposal regulations for your location along with recommendations in the Safety Data Sheet to determine the safe disposal of this product. This also applies to damaged test kit contents.
- Dispose of all used reagents and any other contaminated disposable materials following procedures for infectious or potentially infectious waste. It is the responsibility of each laboratory to handle solid and liquid waste according to their nature and degree of hazardousness and to treat and dispose of them (or have them treated and disposed of) in accordance with any applicable regulations.
- Operators must be capable of distinguishing the colours red, blue, and green.
- The probe should not be diluted or mixed with other probes.
- All products should be validated before use.
- Internal controls should be carried out by using unaffected cell populations in testing samples.
- Custom probes are specifically developed for individual customers' RESEARCH USE ONLY (RUO) requirements and not with the intention of being used for in vitro diagnostic examination. Therefore, prior to any use of these probes, users should review the design of such probes to confirm they are suitable for their requirements.

## Storage and Handling

1. Store the probe between -25°C to -15°C.
2. Based on the stability established for other substantially equivalent CytoCell probes, this myProbes product should be stable for 2 years post manufacture date when stored as indicated on the label.
3. Store the probe and counterstain vials in the dark. Ensure that exposure of the probe and counterstain to laboratory lights is limited at all times.

## Known Cross-Reactivity

Cross hybridisation maybe observed at QC release on the sample type specified to 15q11.2 & 16p11.2.

## Customer Support

Please contact the CytoCell Technical Support Department or email [probes@cytoCELL.com](mailto:probes@cytoCELL.com).

## Patents and Trademarks

myProbes and CytoCell are registered trademarks of CytoCELL Ltd.  
For Research Use Only. Not for use in diagnostic procedures.

### CytoCELL Ltd.

Oxford Gene Technology  
418 Cambridge Science Park,  
Milton Road,  
Cambridge, CB4 0PZ, UK  
T: +44(0)1223 294048  
F: +44(0)1223 294986  
E: [probes@cytoCELL.com](mailto:probes@cytoCELL.com)  
W: [www.ogt.com](http://www.ogt.com)

